



OFFICE BUILDING  
DIAGONAL · PARC CENTRAL

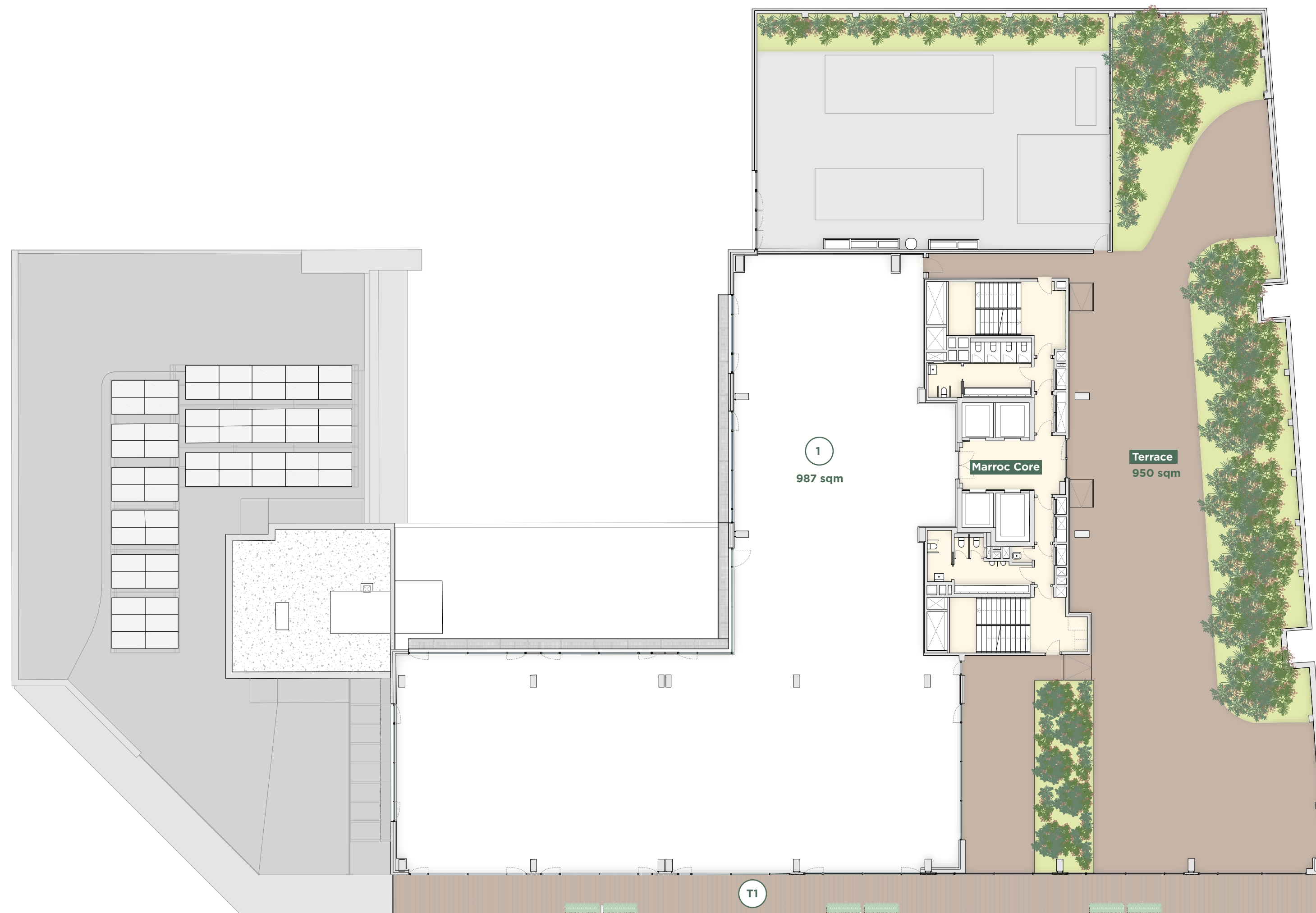
## 9<sup>th</sup> floor



Lettable area: **987 sqm**  
Private terrace: **182 sqm**  
Community terrace: **950 sqm**  
Office 1: **987 sqm**

1/8 occupancy ratio

Carrer de Bilbao



Carrer de Marroc

common areas offices terraces

