



OFFICE BUILDING
DIAGONAL · PARC CENTRAL

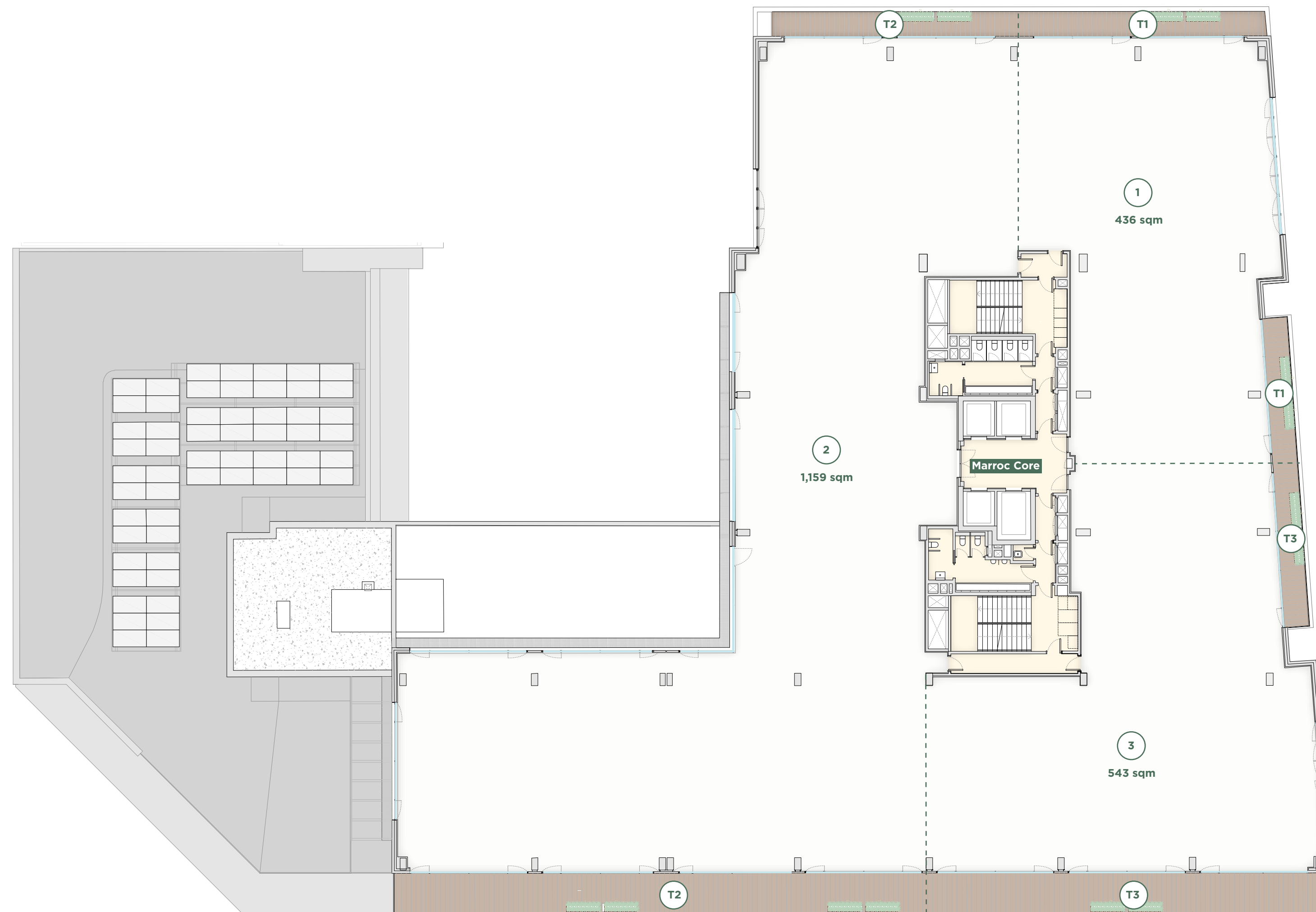
8th floor



Lettable area: **2,138 sqm**
Private terraces: **230 sqm**
Office 1: **436 sqm**
Office 2: **1,159 sqm**
Office 3: **543 sqm**

1/8 occupancy ratio

Carrer de Bilbao



Carrer de Marroc

common areas offices terraces

