



OFFICE BUILDING  
DIAGONAL · PARC CENTRAL

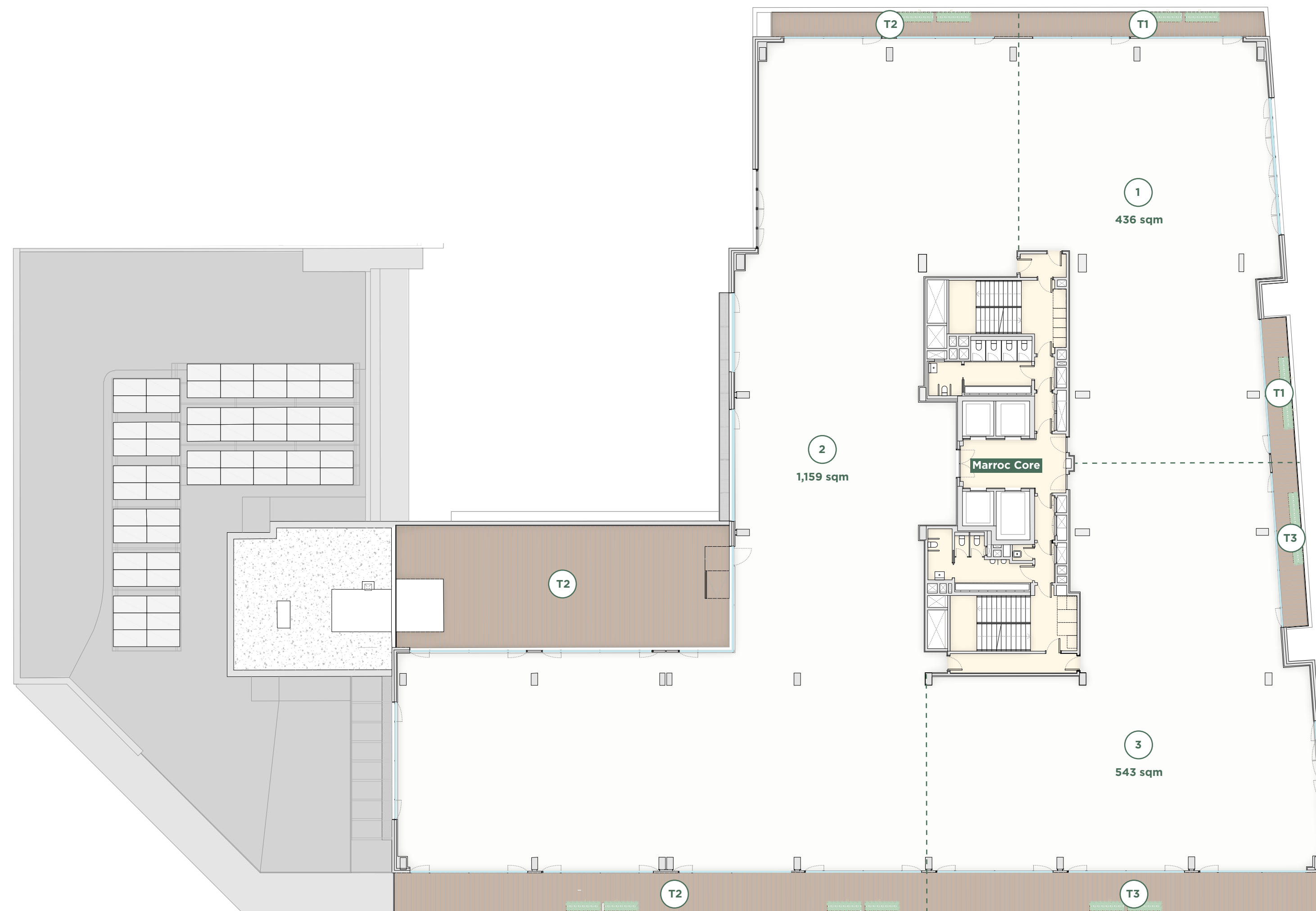
## 7<sup>th</sup> floor



Lettable area: **2,138 sqm**  
Private terraces: **390 sqm**  
Office 1: **436 sqm**  
Office 2: **1,159 sqm**  
Office 3: **543 sqm**

1/8 occupancy ratio

Carrer de Bilbao



Carrer de Marroc

common areas offices terraces

