



OFFICE BUILDING
DIAGONAL · PARC CENTRAL

1st–5th floors

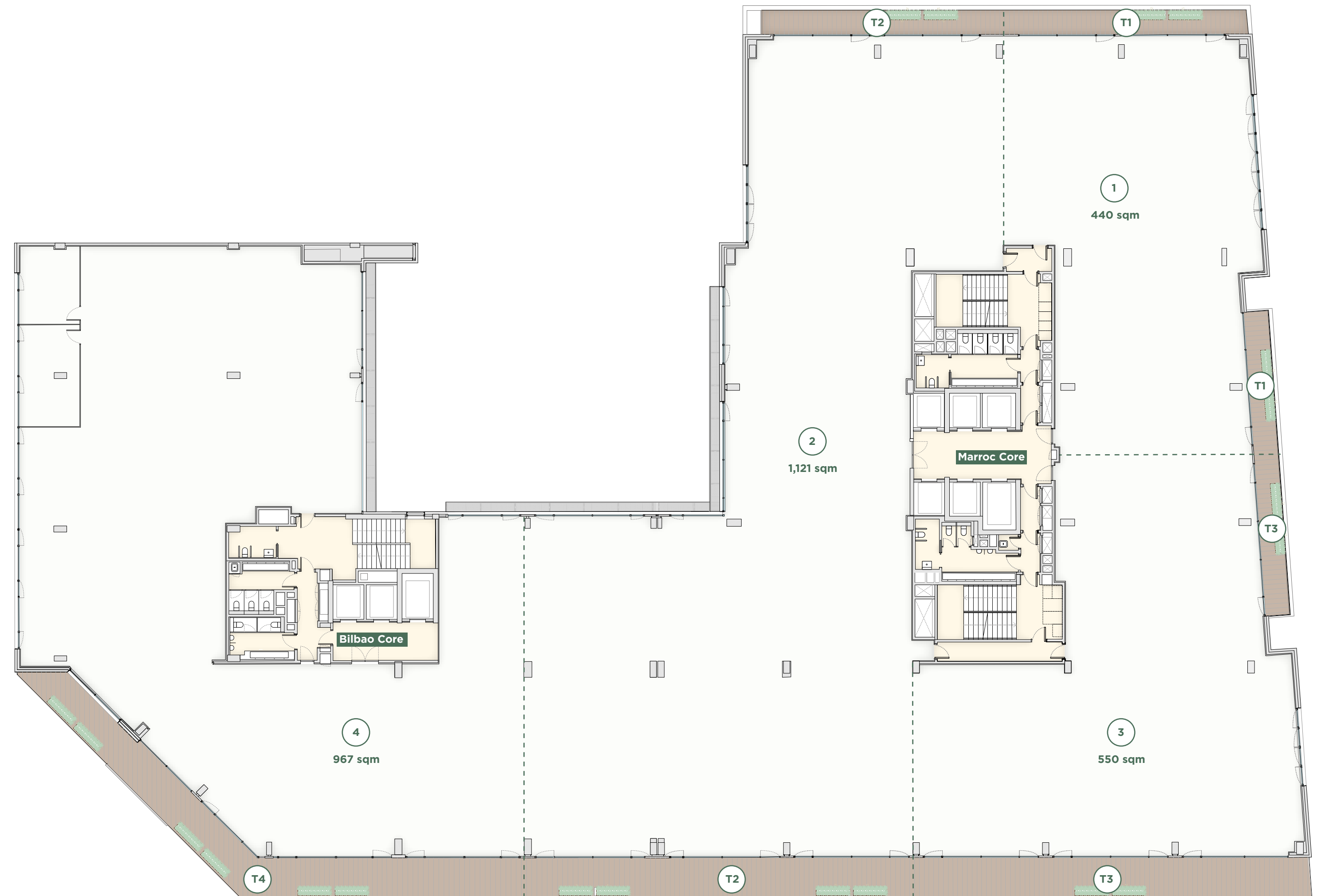


Lettable area: **3,078 sqm**
Private terraces: **325 sqm**
Office 1: **440 sqm**
Office 2: **1,121 sqm**
Office 3: **550 sqm**
Office 4: **967 sqm**

1/8 occupancy ratio



Carrer de Bilbao



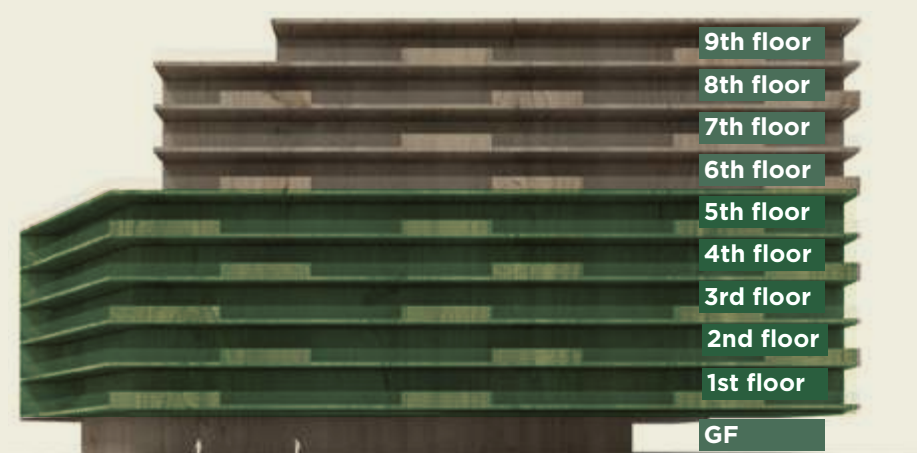
Carrer de Marroc

common areas offices terraces



OFFICE BUILDING
DIAGONAL · PARC CENTRAL

1st–5th floors



Lettable area: **3,078 sqm**
Private terraces: **325 sqm**
Office 1: **440 sqm**
Office 2: **1,121 sqm**
Office 3: **550 sqm**
Office 4: **967 sqm**

1/8 occupancy ratio

Carrer de Bilbao



Carrer de Marroc

common areas offices terraces

