



OFFICE BUILDING
DIAGONAL · PARC CENTRAL

GF



Total usable : 1,100 sqm
bilMA gardens : 429,50 sqm
Terrace : 1,950 sqm

1/8 occupancy ratio

Carrer de Bilbao



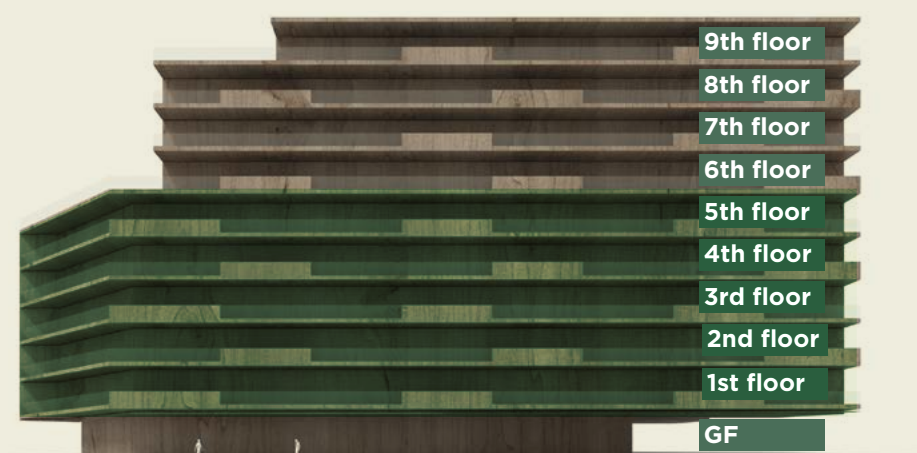
Carrer de Marroc

common areas amenities terrace



OFFICE BUILDING
DIAGONAL · PARC CENTRAL

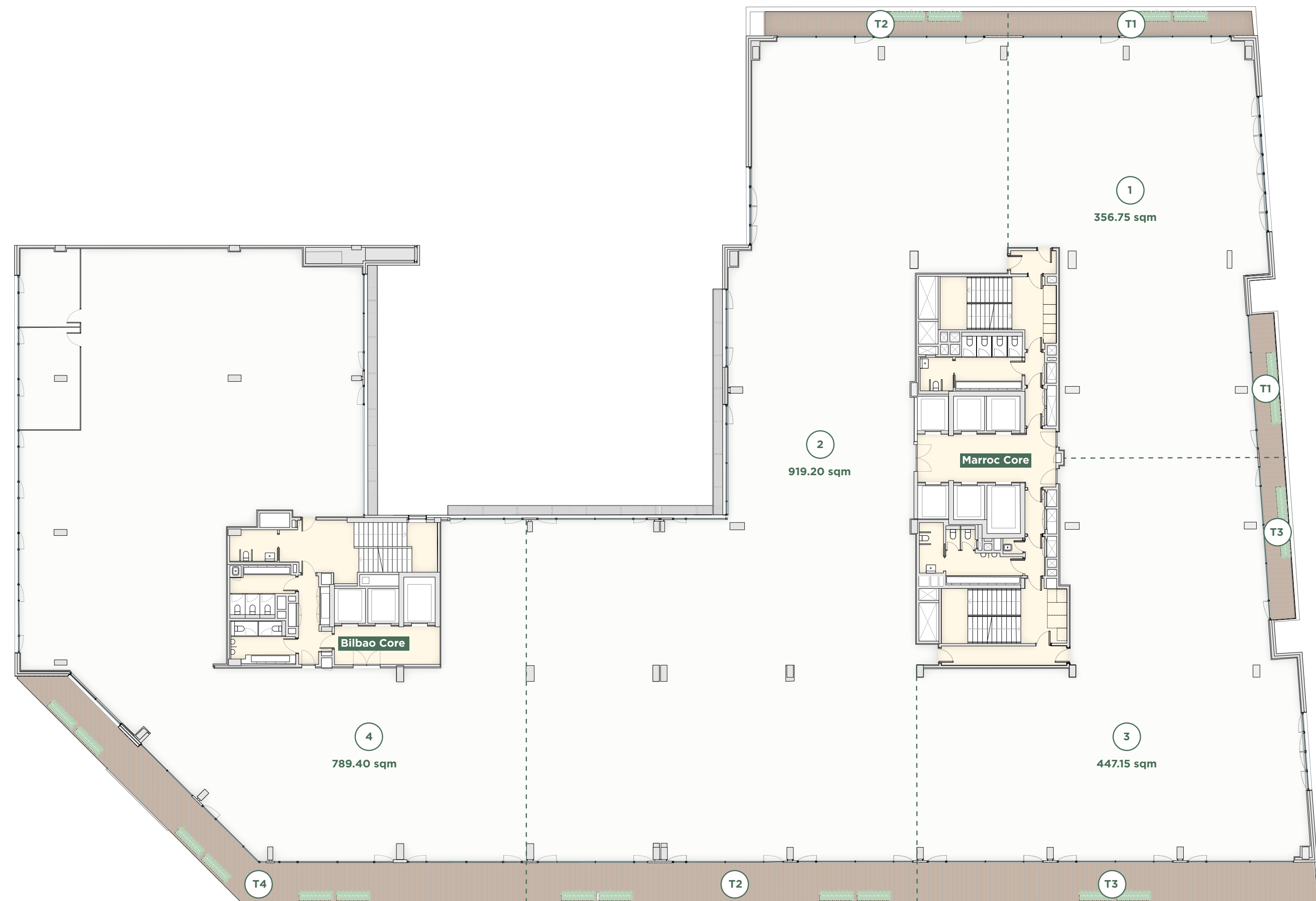
1st–5th floors



Lettable area: 2,734.20 sqm
Terraces: 302 sqm

1/8 occupancy ratio

Carrer de Bilbao



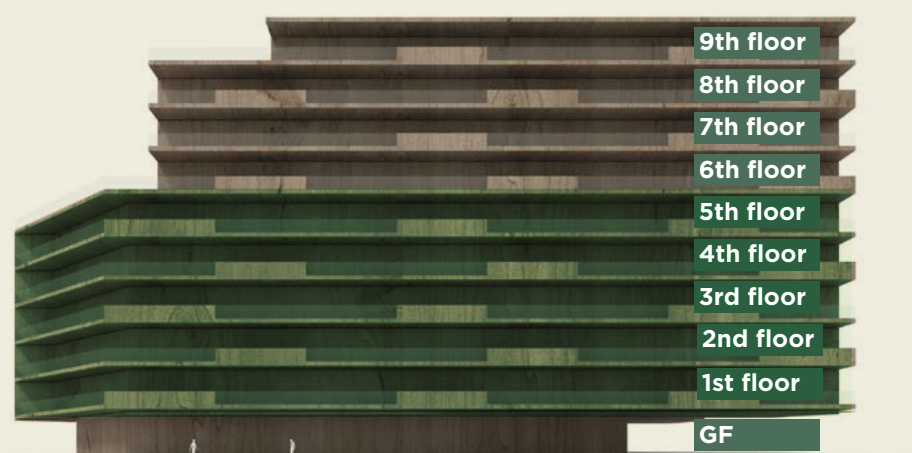
Carrer de Marroc

common areas offices terraces



OFFICE BUILDING
DIAGONAL · PARC CENTRAL

1st–5th floors



Lettable area: 2,734.20 sqm
Terraces: 302 sqm

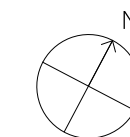
1/10 occupancy ratio

Carrer de Bilbao



Carrer de Marroc

common areas offices terraces





OFFICE BUILDING
DIAGONAL · PARC CENTRAL

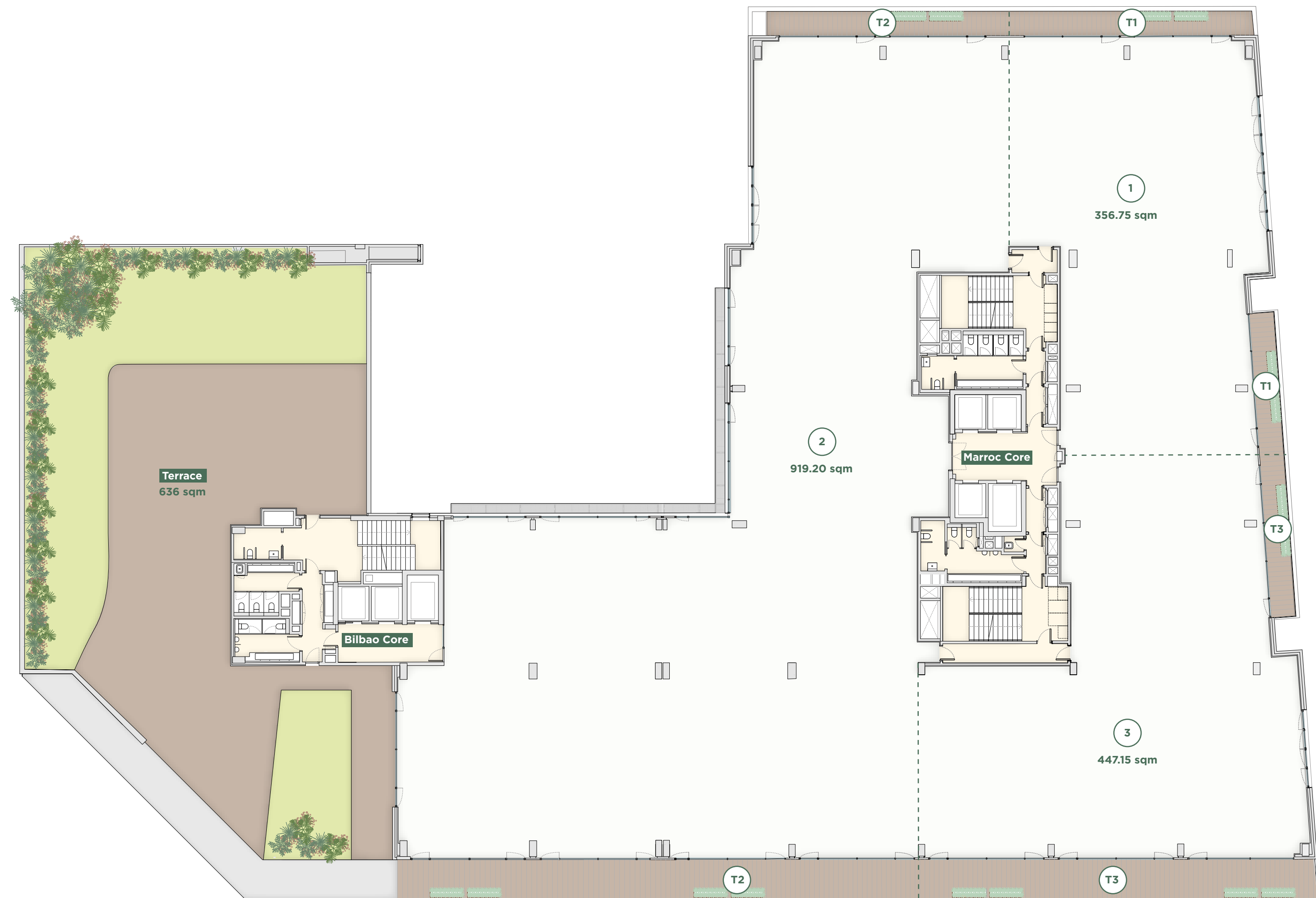
6th floor



Lettable area: 2,106.45 sqm
Terraces: 302 sqm

1/8 occupancy ratio

Carrer de Bilbao



Carrer de Marroc

common areas offices terraces



OFFICE BUILDING
DIAGONAL · PARC CENTRAL

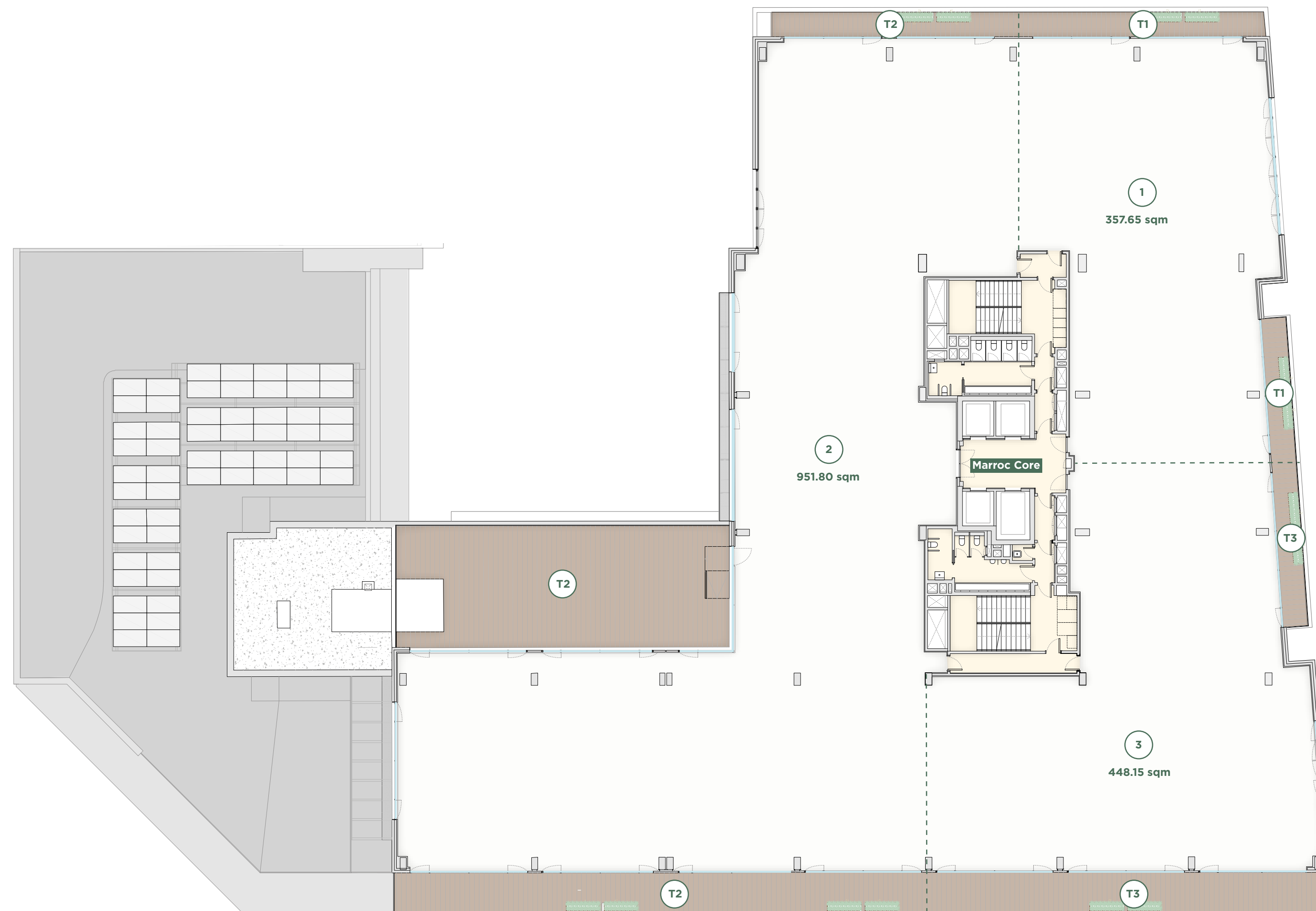
7th floor



Lettable area: 1,892.60 sqm
Terraces: 397 sqm

1/8 occupancy ratio

Carrer de Bilbao



Carrer de Marroc

common areas offices terraces



OFFICE BUILDING
DIAGONAL · PARC CENTRAL

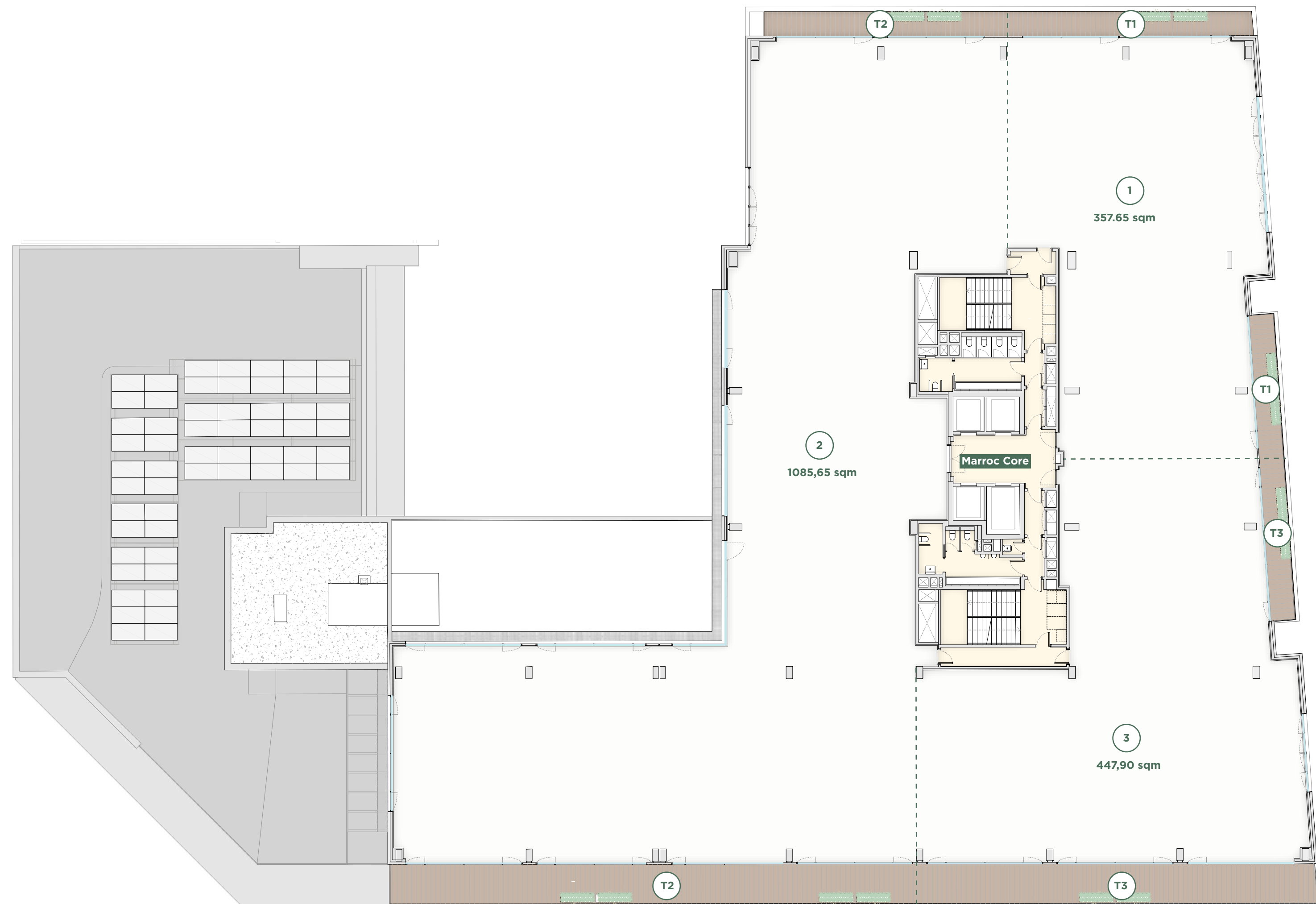
8th floor



Lettable area: **1,892.60 sqm**
Terraces: **236 sqm**

1/8 occupancy ratio

Carrer de Bilbao



Carrer de Marroc

common areas offices terraces





OFFICE BUILDING
DIAGONAL · PARC CENTRAL

9th floor



Lettable area: **883.35 sqm**
Community terrace: **948 sqm**

1/8 occupancy ratio

Carrer de Bilbao



Carrer de Marroc

common areas offices terraces

